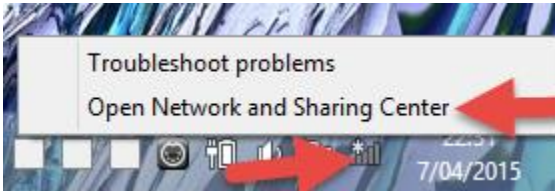


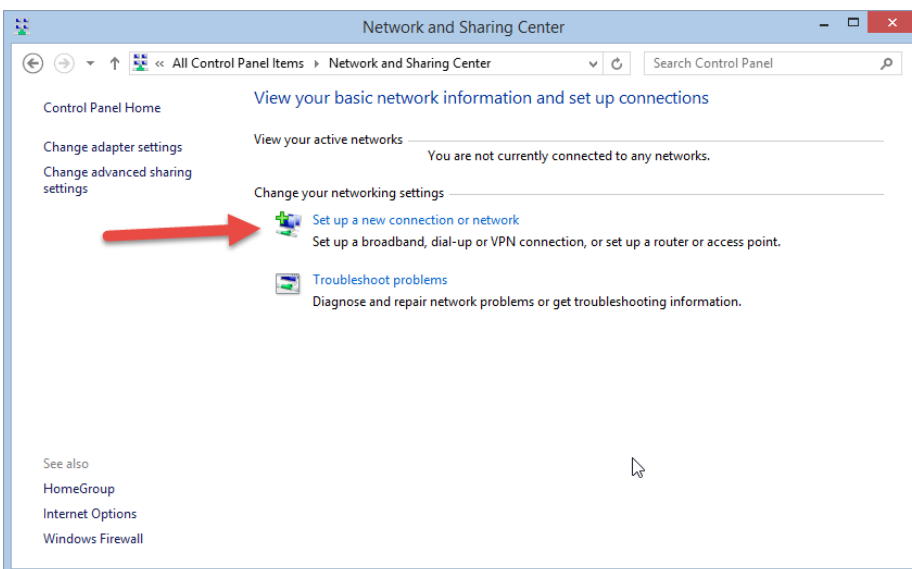
How to connect to the Telenet WiFree network with a laptop (or other EAP WiFi's).

Written by Erwin Craps – IT Helps bvba – <http://ithelps.eu>

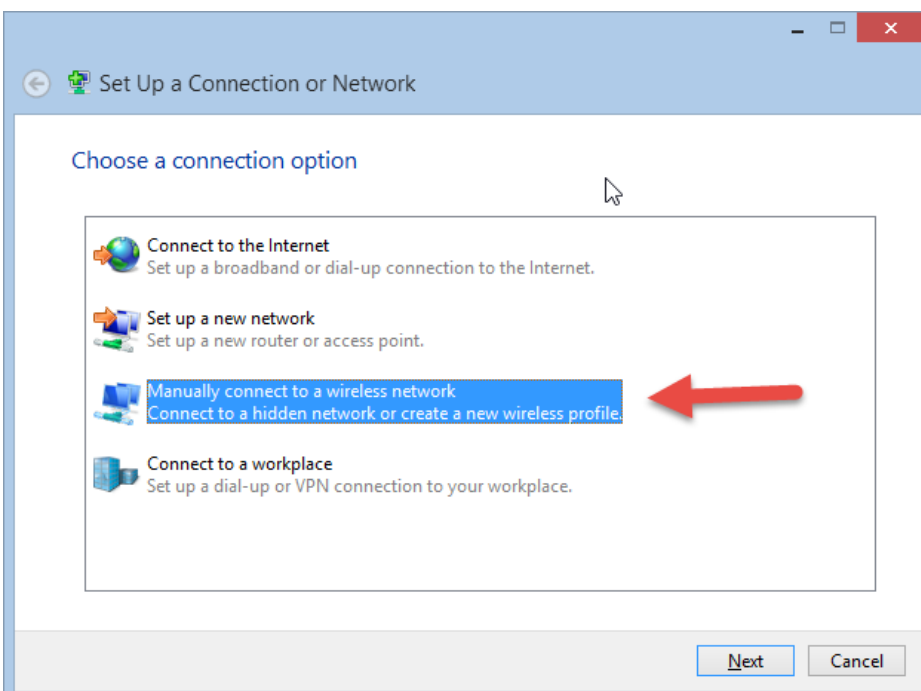
Right click on the Wifi icon in the system tray, and click “Open Network and Sharing Center”



Click “Set up a new connection or network”



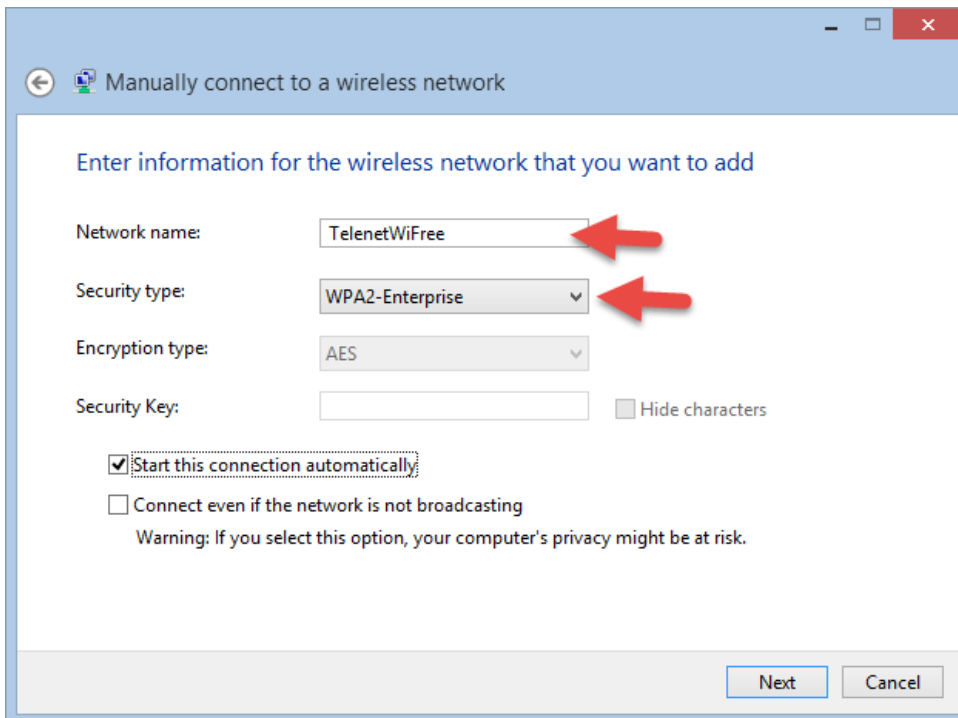
Click “Manually connect to a wireless network”



Enter the SSID name identically like you see it in the wifi network list.

Choose “WPA2-Enterprise” as security type.

Next.



Manually connect to a wireless network

Enter information for the wireless network that you want to add

Network name:

Security type:

Encryption type:

Security Key: Hide characters

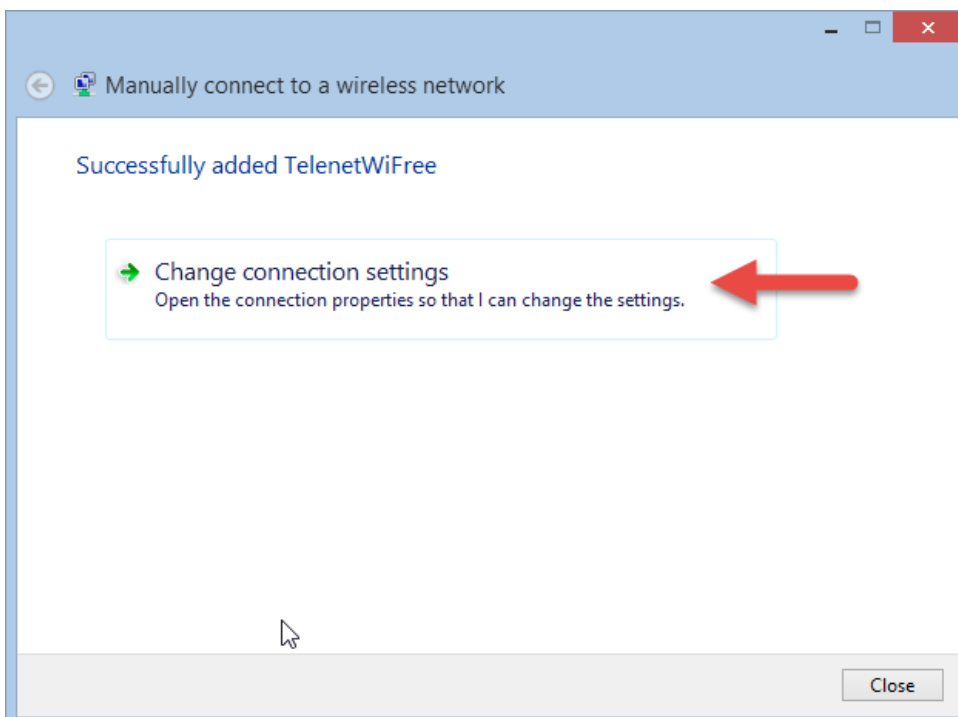
Start this connection automatically

Connect even if the network is not broadcasting

Warning: If you select this option, your computer's privacy might be at risk.

Next Cancel

Click to change the connection settings.



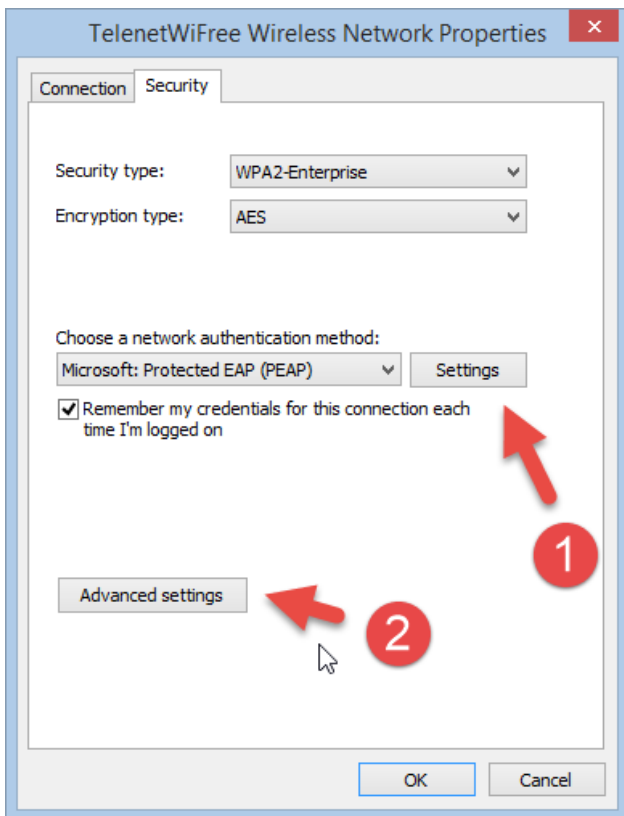
Manually connect to a wireless network

Successfully added TelenetWiFree

Change connection settings
Open the connection properties so that I can change the settings.

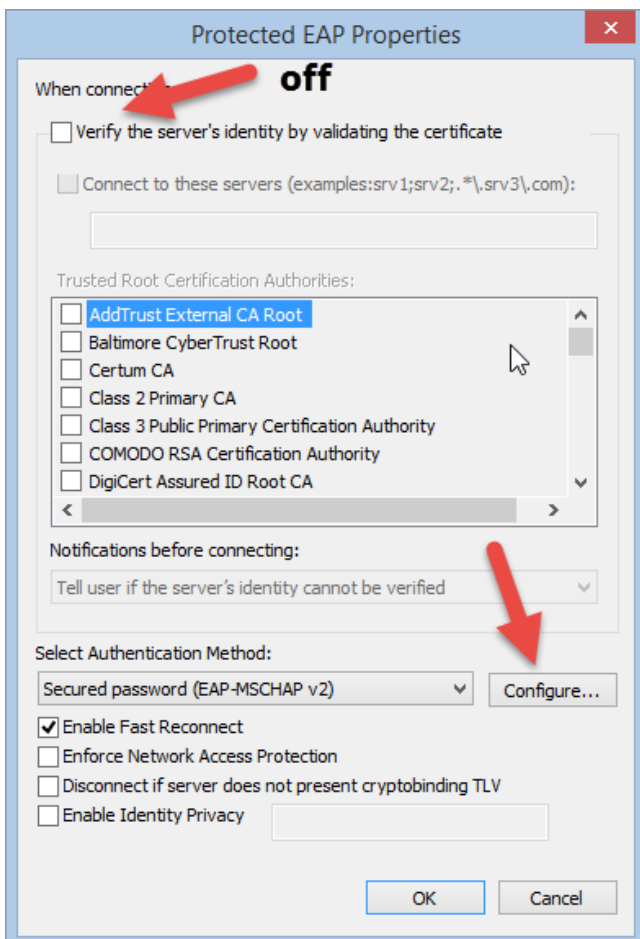
Close

We need to enter 2 screens here, first click on “Settings”

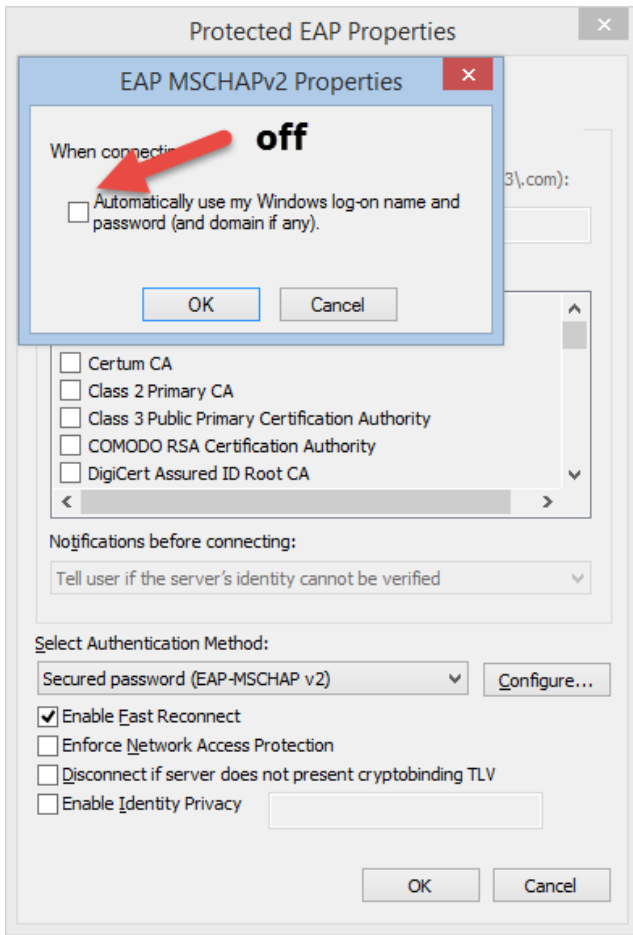


Turn off “Verify the server’s certificate by validating the certificate”

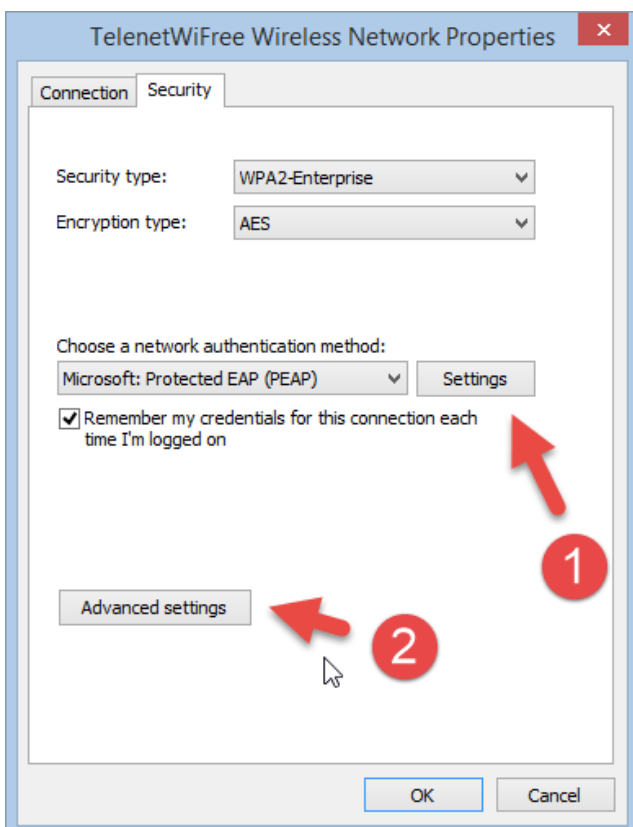
Click on “Configure”



Make sure the “Automatically use my Windows log-on name and password” is off.
In Windows 7 this is on by default, in Windows 8 this is off by default.



Click twice ok, until you get back to this screen we had before.
Now we go into the second screen, click on “Advanced Settings”



Turn on “Specify authentication mode”

Change list to “User authentication”

Click on “Save credentials”.

Enter your username and password.

Now click a few times “ok” to confirm and exit all screens.

Your wifi should now connect automatically.

